



Model 662-IC/PRO/H/R



Operating and Assembly Manual

**Midwest Equipment Manufacturing, Inc.
5225 Serum Plant Road
Thorntown, IN 46071**

SAFETY RULES

Remember, any power equipment can cause injury if operated improperly or if the user does not understand how to operate the equipment. Exercise caution at all times when using power equipment.



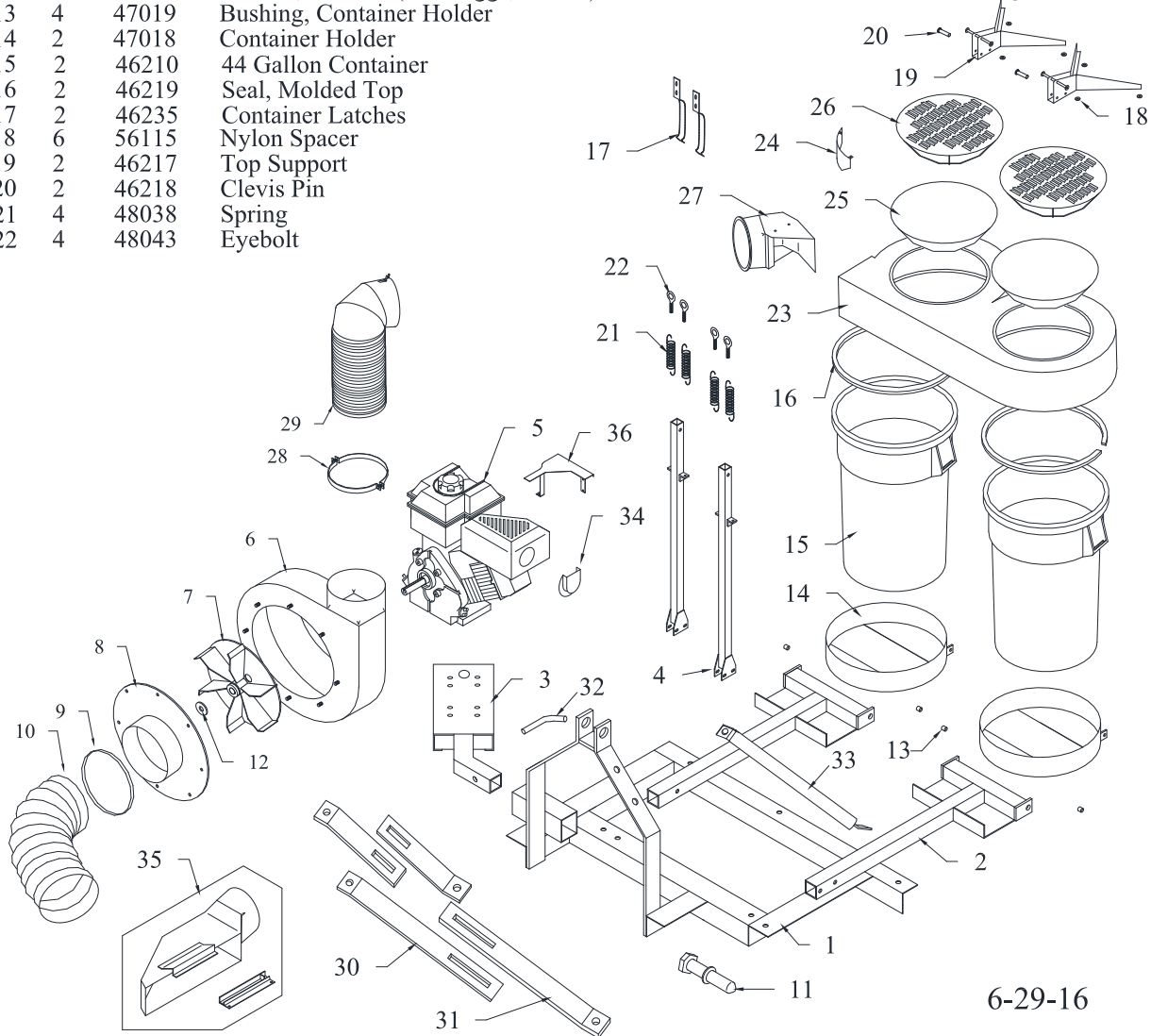
This symbol means Attention!!!! It is used to point out safety precautions.

- Read and follow all instructions in this manual before assembly or operation of this equipment. Failure to comply with these instructions may result in personal injury. Keep this manual for future reference and for ordering replacement parts.
- Read this instruction manual carefully. Become familiar with the controls and proper use of this equipment.
- Read the engine owners manual and safe operation rules before using this equipment.
- Never allow children less than 16 years of age to operate the Trac-Vac. Children 16 years and older should operate **only** under close parental supervision.
- Do not allow anyone to operate this equipment without proper instruction.
- Do not allow passengers to ride on the Trac-Vac or on the towing vehicle.
- Keep children and pets out of area of operation.
- Check fuel before starting engine. **Do Not** fill fuel tank indoors, or while engine is running or hot. Wipe off any spilled fuel before starting engine.
- Engine and muffler get **HOT! Do Not** touch! Keep debris from accumulating on or around engine and muffler to avoid fire hazard.
- Allow engine to cool before storing in any enclosed area. Never store Trac-Vac with fuel in tank.
- Do not operate engine if air cleaner or cover is removed, except for adjustments. Removal of the part could create a fire hazard.
- Keep hands, feet, face, long hair and clothing out of inlet and discharge areas. There are **ROTATING BLADES** inside these openings.
- Make certain that all moving parts come to a complete stop before cleaning, repairing or inspection. Disconnect spark plug wire and keep away from plug to prevent accidental starting.
- If Trac-Vac should become clogged with debris, **SHUT OFF ALL ENGINES** and wait until impeller comes to a complete stop before attempting to remove obstruction. Disconnect spark plug wire to prevent accidental starting.
- If excessive vibration occurs while operating your Trac-Vac, stop the engine immediately, disconnect the spark plug wire and allow all moving parts to stop completely before taking the following steps.
 - A. Inspect for damage.
 - B. Repair or replace any damaged parts.
 - C. Check for loose parts and tighten to assure continued safe operation.
- Check all hardware periodically to insure safe operation.
- Check cart cover periodically for wear and replace if worn or damaged.
- **Never** operate Trac-Vac without intake hose and exhaust hose attached in proper place.
- **Do Not** remove exhaust hose or attempt to empty contents of container while engine is running.
- Keep all shields and guards in place and securely attached.
- Always wear eye protection (safety glasses or goggles) when operating this equipment.
- **Do Not** stand behind unit in exhaust discharge area while engine is running.
- **Do Not** operate this equipment while intoxicated or while taking medications that could impair reactions or senses.
- Operate this equipment at reduced ground speed on rough terrain, along creeks and ditches and on slopes to prevent tipping or loss of control.
- Vehicle stability and braking are affected by the addition of this unit. Do not fill the Trac-Vac to its full capacity without checking the capability of the towing vehicle to safely pull and stop with the unit attached.
- **Do Not** operate on slopes in excess of 10 degrees. **STAY OFF OF STEEP SLOPES!**
- Follow the maintenance instructions outlined in this manual.

Trac-Vac Model 662

Key	Qty.	P/N	Desc.
1	1	66210	Frame, 662
2	2	47014	Frame, 470F-D
3	1	56510-1	Frame, 565RH
4	2	47020	Vertical Upright
5	1	56017	Engine, 6.5 HP Briggs Intek El.
	1	56021	Engine, 5.5 HP Briggs Intek IC
	1	56018	Engine, 6.5 HP Briggs Intek Pro
	1	56022	Engine, 5.5 HP Honda
	1	56015	Engine, 6 HP Kohler, 7/8" Shaft
	1	86028	Engine, 9 HP Robin (Subaru)
6	1	56030	Turbine Housing (5.5 Briggs, Honda)
	1	46242	Turbine Housing (6.5 Briggs, Kohler)
7	1	56040	Turbine, 5HP (5.5 Briggs, Honda)
	1	46254	Turbine, 6HP (6.5 Briggs, Kohler)
8	1	18050	Inlet, 8" (5.5 Briggs, Honda)
	1	66010	Inlet, 8" (6.5 Briggs, Kohler)
9	2	18119	Hose Clamp, 8"
10	1	86101	Hose, 8" x 60"
11	2	85024	Drawpin, 7/8"
12	1	56107	Washer, Turbine (5.5 Briggs, Honda)
13	4	47019	Bushing, Container Holder
14	2	47018	Container Holder
15	2	46210	44 Gallon Container
16	2	46219	Seal, Molded Top
17	2	46235	Container Latches
18	6	56115	Nylon Spacer
19	2	46217	Top Support
20	2	46218	Clevis Pin
21	4	48038	Spring
22	4	48043	Eyebolt

Key	Qty.	P/N	Desc.
23	1	68222	Double Molded Top
24	1	46248	Filter Sheild
25	2	46228	Filter
26	2	46227	Filter Support
27	1	66238	Exhaust Boot
28	1	45101	Metal Hose Clamp, 6"
29	1	66230	Exhaust Hose, 662
30	2	85060	Upper Sway Bracket
		85063	Upper Sway Bracket (BX)
31	2	85061	Lower Sway Bracket
		85064	Lower Sway Bracket (BX)
32	1	85226	Bent Pin
33	1	66211	Frame Support
34	1	86115	Muffler Deflector (5.5., 6.5 Briggs)
35	1	***-8	Deck Chute Ass'y (Deck Specific)
36	1	58075	Engine Guard
	1	1526502	Muffler Deflector, (Kohler)
	1	56122	Spacer Kit (Honda)
	2	45131	Decal, White Trac-Vac
	1	45133	Decal, Warning



6-29-16

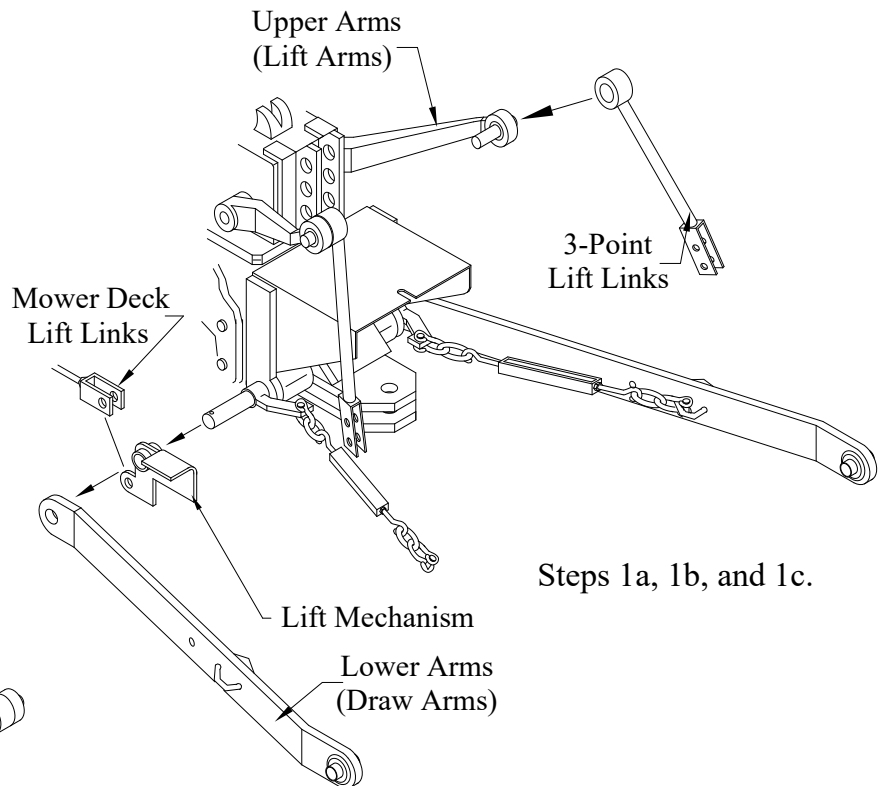
Model 662 Assembly Instructions

1.) If the mower deck is raised and lowered by a connection to the 3-point draw arms, a lift kit must be installed before mounting a vacuum attachment on the 3-point draw arms.

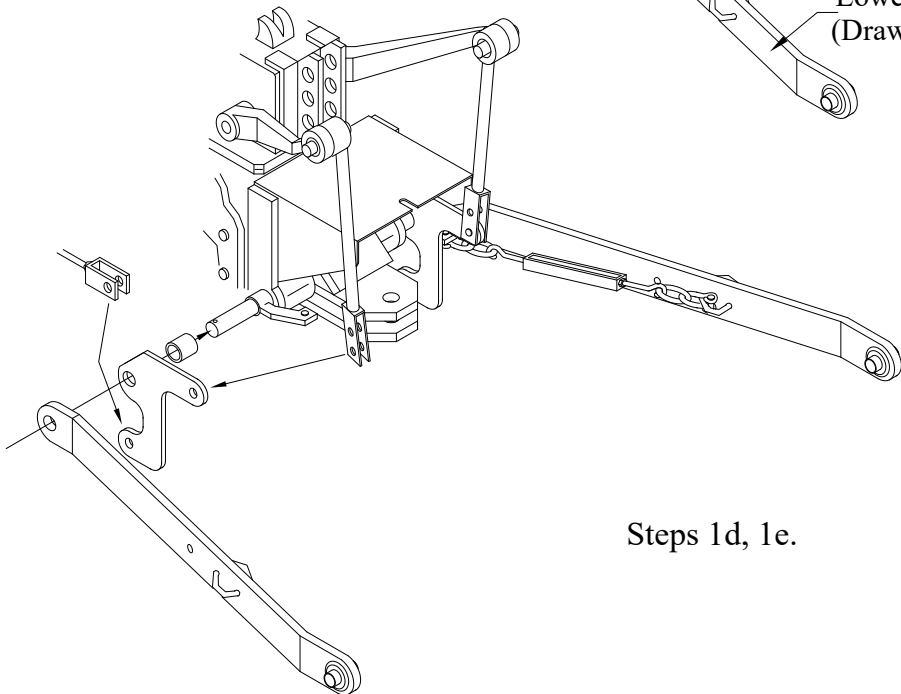
1a.) Remove the 3-pt. lift links from the draw arms.

1b.) Remove the draw arms from the 7/8" mounting pins.

1c.) Remove the mower deck lift link from the mower lift mechanism that is on the tractor. Remove the mower lift mechanism from the draw arms.



Steps 1a, 1b, and 1c.



Steps 1d, 1e.

1d.) Slip the spacers and the lift brackets over the 7/8" pins with the lift brackets oriented as illustrated, and the spacers to the inside of the lift brackets. Slip the lower arms back into place and resecure.

1e.) Attach lift link from mower deck to lift bracket at hole location illustrated. Attach lift link to lift bracket at hole location illustrated. Secure both with clevis pins that came out of original lift system.

1f.) Some adjustment may be needed to achieve full range of motion with the cutter deck. Adjustment is made to the lift link that runs from the lift brackets installed, to the deck itself. Note: be carefull when first installed and when adjusting, if lift mechanism is not adjusted correctly damage to the tractors lift and or 3-pt. mechanism is possible.

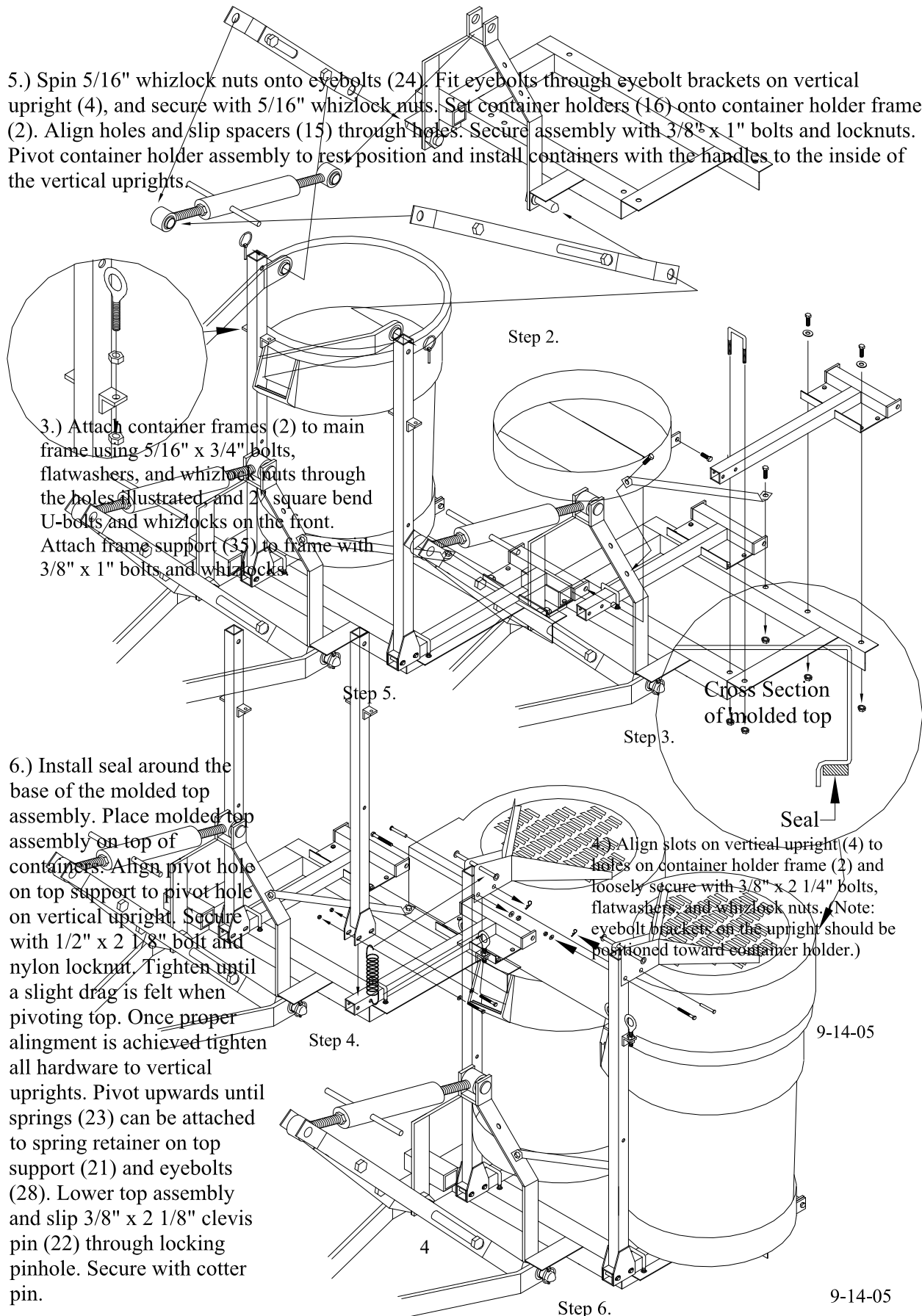
Note: Some tractors have slightly different 3-pt. configurations, some of which need a special, tractor specific, 3-point lift kit.

2.) Slip stabilizer brackets onto 7/8" drawpins (11) on frame (1) and slip drawpins into mount holes in the lower arms of the 3-point hitch, secure with the lynch pin on tractor. Rotate frame up to the center link on the tractor and pin the top side of the stabilizers brackets (32&33) and frame to the center link. Lift frame up to desired height and tighten bolts in the stabilizer brackets to hold that height position. Adjust center link to level frame.

5.) Spin 5/16" whizlock nuts onto eyebolts (24). Fit eyebolts through eyebolt brackets on vertical upright (4), and secure with 5/16" whizlock nuts. Set container holders (16) onto container holder frame (2). Align holes and slip spacers (15) through holes. Secure assembly with 3/8" x 1" bolts and locknuts. Pivot container holder assembly to rest position and install containers with the handles to the inside of the vertical uprights.

3.) Attach container frames (2) to main frame using 5/16" x 3/4" bolts, flatwashers, and whizlock nuts through the holes illustrated, and 2" square bend U-bolts and whizlocks on the front. Attach frame support (35) to frame with 3/8" x 1" bolts and whizlocks.

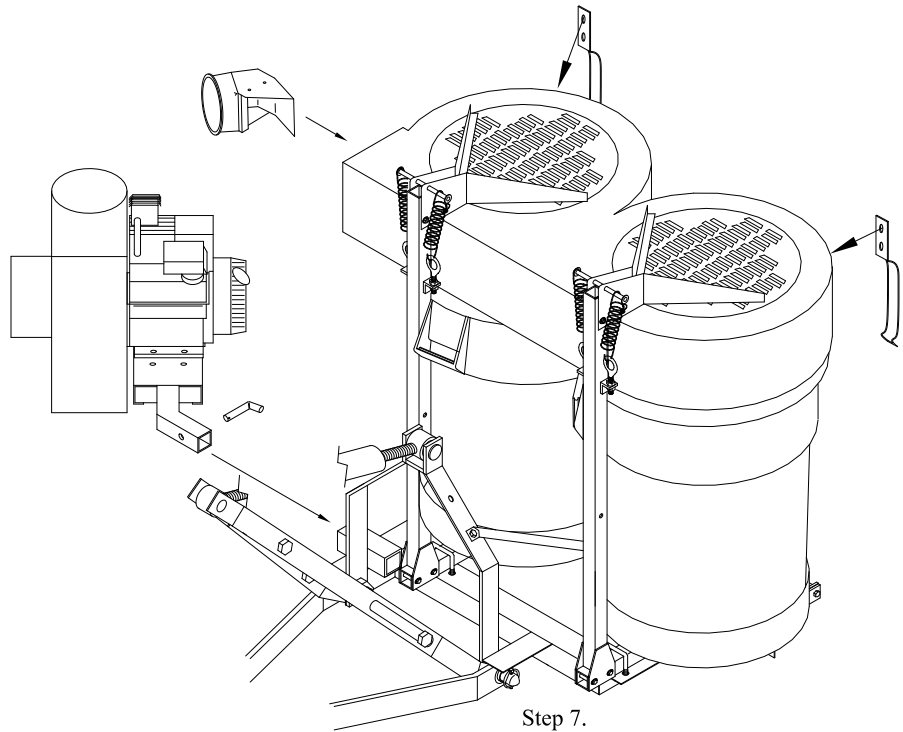
6.) Install seal around the base of the molded top assembly. Place molded top assembly on top of containers. Align pivot hole on top support to pivot hole on vertical upright. Secure with 1/2" x 2 1/8" bolt and nylon locknut. Tighten until a slight drag is felt when pivoting top. Once proper alignment is achieved tighten all hardware to vertical uprights. Pivot upwards until springs (23) can be attached to spring retainer on top support (21) and eyebolts (28). Lower top assembly and slip 3/8" x 2 1/8" clevis pin (22) through locking pinhole. Secure with cotter pin.



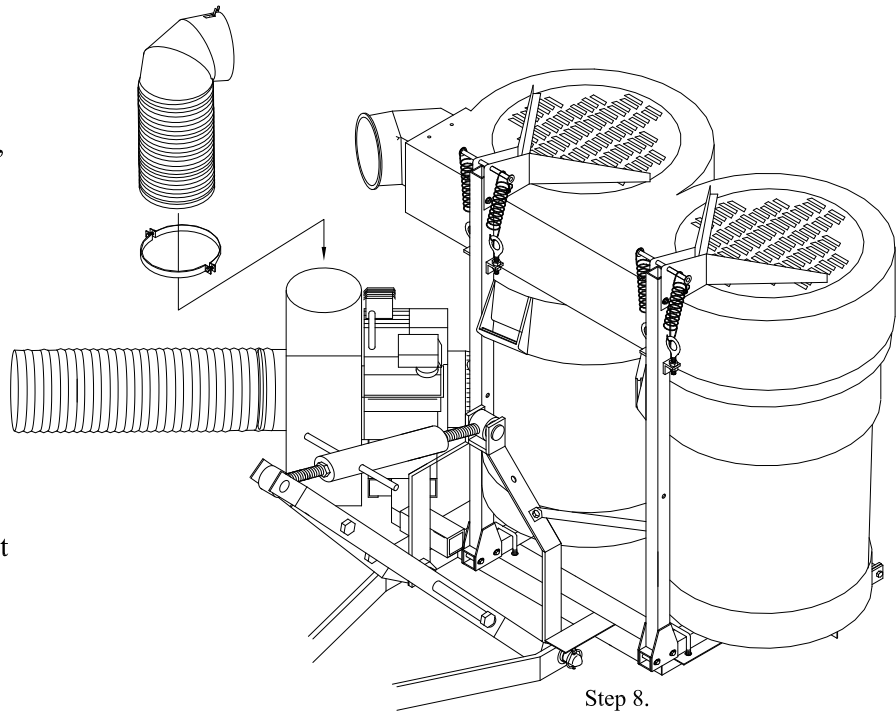
9-14-05

9-14-05

7.) Align slots on container latch (19) to holes on molded top and secure with 1/4" x 1/2" truss head screws and whizlocks, truss head to the outside. Hook container latches over handles. Slide exhaust boot (29) through opening on molded top with lip on the outside. Tighten into place using 1/4" x 3/4" truss head screws and whizlocks, with truss head to the outside of top. Slip engine/blower assembly into receiver on frame (1) and secure with 5/8" bent pin (34) and hairclip pin. Attach discharge chute to mower deck.



8.) With molded top in closed position, slip metal hose clamp (30) over end of metal exhaust hose (31), and slip both over exhaust opening on blower housing. Rotate metal exhaust hose to line up with exhaust boot on molded top and tighten bolts in metal hose clamp (30) securing exhaust hose to blower housing. Slip intake hose over inlet in blower housing, secure with 8" band clamp (9), cut hose to length and slip over neck on discharge chute and secure with 8" band clamp.



9.) Fit filters (27) over filter support assemblies (28).

10.) Read engine operating instructions and service engine before starting, engine is shipped dry of oil and gas. Frequently check all fasteners for tightness.



MAINTENANCE SCHEDULE

MAINTENANCE

Service Dates



DANGER: The Frac-Vac was built to be operated according to the rules for safe operation in this manual. Carelessness or error on the part of the operator can result in serious injury. This unit is capable of amputating fingers or hands and throwing objects. Failure to comply with the safety instructions could result in serious injury or death.

MAINTENANCE SCHEDULE	Before each use	After each use	Every season	Before Storage															
Check engine oil level	X																		
Check tire pressure	X																		
Check all hardware for tightness	X																		
Lubricate			X																
Clean		X		X															
Maintain engine per engine manual																			

BEFORE EACH USE

CHECK FOR LOOSE HARDWARE

- Make a thorough visual check of the unit for any bolts and nuts which may have become loose.
Retighten any loose nuts and bolts

CHECK TIRE PRESSURE

- Check tire pressure regularly. The recommended tire pressure is printed on the tire.

CHECK ENGINE OIL LEVEL

- Check oil level before each use. Maintain engine oil as instructed in engine manual.

LUBRICATION

- Use a light machine oil to lubricate the axle where the hitch tongue pivots and the latch and pivot bolt at the beginning of each season.
- Grease or oil wheel bearings, using automotive wheel bearing grease at least once every season.



WARNING: Always stop engine and disconnect spark plug wire before lubricating, cleaning or before maintenance or repairs.

ENGINE MAINTENANCE

- Check oil level before each use, maintain engine oil according to the engine manual
- Service air cleaner after every 25 hours of normal conditions. Under extremely dusty conditions, clean every few hours. Poor engine performance usually indicates that the air cleaner needs to be serviced.
- Clean spark plug and reset gap once every season. It is recommended that the spark plug be replaced at the start of each season. Check the engine manual for the correct spark plug and gap specifications.

CLEANING

- Clean the unit after each use. Grass clippings and leaves can mildew and cause damage if not properly cleaned.
- Clean the engine regularly with a cloth or brush. Remove all dirt and debris from muffler area.

TROUBLESHOOTING

PROBLEM	POSSIBLE CAUSE	CORRECTIVE ACTION
Engine fails to start	<ol style="list-style-type: none"> 1. Spark plug wire disconnected 2. Fuel tank empty 3. Faulty spark plug 	<ol style="list-style-type: none"> 1. Connect wire to spark plug 2. Fill tank with clean fuel 3. Clean, adjust gap or replace
Loss of power or erratic operation	<ol style="list-style-type: none"> 1. Spark plug wire loose 2. Blocked fuel line 3. Water or dirt in fuel system 4. Dirty air cleaner 5. Unit running on choke 	<ol style="list-style-type: none"> 1. Connect & tighten spark plug wire 2. Clean fuel line 3. Disconnect fuel line at carburetor drain fuel tank. Refill with fresh fuel 4. Service air cleaner (refer to engine manual) 5. Move choke lever to OFF position
Engine overheats	<ol style="list-style-type: none"> 1. Engine oil level low 2. Operating below full RPM 	<ol style="list-style-type: none"> 1. Fill crankcase with proper oil 2. Run throttle full open.
Excessive vibration	<ol style="list-style-type: none"> 1. Damaged turbine or loose parts 	<ol style="list-style-type: none"> 1. Stop engine immediately and disconnect spark plug wire. Tighten all bolts & nuts. Make necessary repairs. If vibration continues, have unit serviced by an authorized dealer.
Unit won't pick up.	<ol style="list-style-type: none"> 1. Discharge chute clogged 2. Foreign object lodged in turbine. 3. Container full 	<ol style="list-style-type: none"> 1. Stop engine & disconnect spark plug wire. Clean inside of discharge chute. 2. Stop engine and disconnect spark plug wire. Remove lodged object in turbine. 3. Stop engine and empty container.

NOTE: Please contact the nearest authorized service dealer for repairs beyond the minor adjustments above.



OPERATING PROCEDURE

BEFORE STARTING, follow engine manufacturer's instructions in preparing engine for operation. Never fill tank indoors, with engine running or while engine is hot. **Do not smoke while filling tank!**

1. Inspect area to be vacuumed and pickup all harmful objects and litter. Rocks and other harmful debris can do serious damage to vacuum assembly and cause bodily injury.
2. For best vacuuming results operate tractor at manufacturer's recommended speed for best cutting. If grass is high, mow first and vacuum on the second pass.
3. Your vacuum is preset to run at approximately(380), 3800-RPM (385), at no load. Do not slow down engine.
4. **SHUT OFF ENGINE TO UNLOAD.**
5. When operating tractor on slope or grade, exercise extreme caution. Do not cut across grade or slope. Mow directly up and down hills.
6. Avoid sudden turns or maneuvers.
7. Periodically check all fasteners for tightness.
8. Listen for unusual vibration of engine or air turbine. If excessive vibration is present, **STOP** engine and check for damage to turbine fan.
9. Always shut off tractor engine and vacuum engine before servicing.
10. Replace deflector shield when discharge chute is removed.
11. When removing clogs, **SHUT OFF ALL ENGINES and wait for all moving part to come to a complete stop! Failure to do so can cause serious bodily injury!**
12. Do not tow unit on public roads.
13. Do not carry passengers on unit.



**CAUTION!!!!
SPINNING BLADE**

EXTENDED STORAGE PROCEDURES

1. Wash and clean vacuum, and lubricate any lubrication points.
2. Drain fuel from the tank and run vacuum until fuel is exhausted in carburetor.
3. Drain and change the engine oil.
4. Clean tires and check pressure. Raising and supporting unit with weight off tires is recommended.
5. When storing a unit with Rubbermaid® containers, leave containers latched to top.

TRAC VAC WARRANTY POLICY

Midwest Equipment Manufacturing, Inc. will repair or replace, free of charge, any part, or parts that are defective in material or workmanship or both for a period of one year residential use, and 90 day's for commercial and rental use. The purchaser will pay transportation charges on parts submitted for replacement under warranty. For warranty service, contact your local dealer from whom the unit was purchased. There are no other express or implied warranties. Some states do not allow limitations on how long an implied warranty lasts, and some states do not allow the exclusion or limitation of incidental or consequential damages, so the above limitation and exclusion may not apply to you. This warranty gives you specific legal rights and you may also have other rights, which vary from state to state.

MIDWEST EQUIPMENT MANUFACTURING, INC.-5225 Serum Plant Rd.-
Thorntown, IN 46071
Phone: 1-800-Trac-Vac

Web Page: www.trac-vac.com E-Mail: sales@midmfg.com