

TRAC VAC

MODEL 565CKG



Operating and Assembly Manual

**Midwest Equipment Manufacturing, Inc.
5225 Serum Plant Road
Thorntown, IN 46071**

SAFETY RULES

Remember, any power equipment can cause injury if operated improperly or if the user does not understand how to operate the equipment. Exercise caution at all times when using power equipment.



This symbol means Attention!!!! It is used to point out safety precautions.

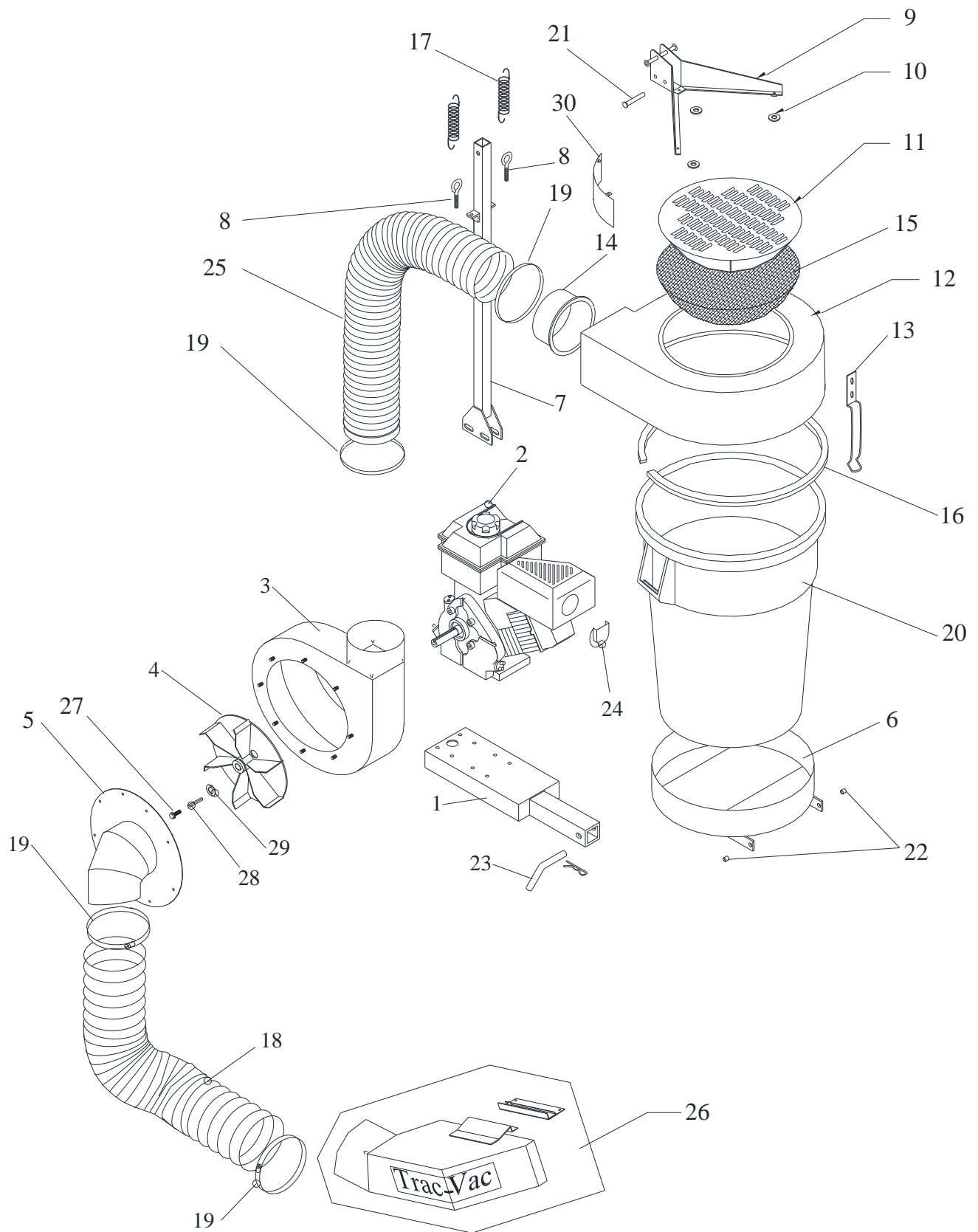
- Read and follow all instructions in this manual before assembly or operation of this equipment. Failure to comply with these instructions may result in personal injury. Keep this manual for future reference and for ordering replacement parts.
- Read this instruction manual carefully. Become familiar with the controls and proper use of this equipment.
- Read the engine owners manual and safe operation rules before using this equipment.
- Never allow children less than 16 years of age to operate the Trac-Vac. Children 16 years and older should operate **only** under close parental supervision.
- Do not allow anyone to operate this equipment without proper instruction.
- Do not allow passengers to ride on the Trac-Vac or on the towing vehicle.
- Keep children and pets out of area of operation.
- Check fuel before starting engine. **Do Not** fill fuel tank indoors, or while engine is running or hot. Wipe off any spilled fuel before starting engine.
- Engine and muffler get **HOT! Do Not touch!** Keep debris from accumulating on or around engine and muffler to avoid fire hazard.
- Allow engine to cool before storing in any enclosed area. Never store Trac-Vac with fuel in tank.
- Do not operate engine if air cleaner or cover is removed, except for adjustments. Removal of the part could create a fire hazard.
- Keep hands, feet, face, long hair and clothing out of inlet and discharge areas. There are **ROTATING BLADES** inside these openings.
- Make certain that all moving parts come to a complete stop before cleaning, repairing or inspection. Disconnect spark plug wire and keep away from plug to prevent accidental starting.
- If Trac-Vac should become clogged with debris, **SHUT OFF ALL ENGINES** and wait until impeller comes to a complete stop before attempting to remove obstruction. Disconnect spark plug wire to prevent accidental starting.
- If excessive vibration occurs while operating your Trac-Vac, stop the engine immediately, disconnect the spark plug wire and allow all moving parts to stop completely before taking the following steps.
 - A. Inspect for damage.
 - B. Repair or replace any damaged parts.
 - C. Check for loose parts and tighten to assure continued safe operation.
- Check all hardware periodically to insure safe operation.
- Check cart cover periodically for wear and replace if worn or damaged.
- **Never** operate Trac-Vac without intake hose and exhaust hose attached in proper place.
- **Do Not** remove exhaust hose or attempt to empty contents of container while engine in running.
- Keep all shields and guards in place and securely attached.
- Always wear eye protection (safety glasses or goggles) when operating this equipment.
- **Do Not** stand behind unit in exhaust discharge area while engine is running.
- **Do Not** operate this equipment while intoxicated or while taking medications that could impair reactions or senses.
- Operate this equipment at reduced ground speed on rough terrain, along creeks and ditches and on slopes to prevent tipping or loss of control.
- Vehicle stability and braking are affected by the addition of this unit. Do not fill the Trac-Vac to its full capacity without checking the capability of the towing vehicle to safely pull and stop with the unit attached.
- **Do Not** operate on slopes in excess of 10 degrees. **STAY OFF OF STEEP SLOPES!**
- Follow the maintenance instructions outlined in this manual.



MODEL 565CKG TRAC VAC

<u>KEY</u>	<u>PART#</u>	<u>DESCRIPTION</u>	<u>QTY</u>
1	56512	Frame, 565 RH	1
2	56018	Engine, Briggs Intek Pro 206CC w/ 1" Shaft	1
3	46242	Turbine Housing, RH	1
4	46265	Turbine, 7/8" Bore	1
	46253	Turbine, 1" Bore, 6 1/2 HP Intek	1
5	56570	Inlet 8" 90° Bend	1
6	47018	Container Holder	1
7	47020	Vertical Upright	1
8	3120518	Eyebolt	2
9	46217	Top Support	1
10	56115	Nylon Spacer	3
11	46233	Filter Support	1
12	48222	Molded Top	1
13	46235	Container Latch	1
14	48040	Intake Nozzle	1
15	46228	Filter	1
16	46219	Seal	1
17	48038	Spring	2
18	56572	Hose, 8" x 48"	1
19	56102	Band Clamp	4
20	46210	Container, 44 Gallon	1
21	46218	Clevis Pin, Vertical Support	1
22	47019	Spacer, Container Holder	2
23	85226	Draw Pin, 5/8"	1
24	56016	Muffler Deflector, Kohler	1
25	65203	Hose, 6" x 42"	1
26	***-6	Chute Assembly (tractor specific)	1
27	3120608	Turbine Bolt	1
28	2501720	Key Stock	1
29	3120801	Split Lock Washer	1
30	46248	Filter Shield	1

Trac-Vac Model 565CKG



MODEL 565CKG ASSEMBLY INSTRUCTIONS

1. Attach hitch and container holder frame to tractor.
2. Slip square tube on frame (1) inside receiver on hitch. Align holes and secure assembly with 5/8" draw pin (23). Secure with hairpin clip. Set engine assembly (2) on frame with inlet facing front of tractor. Align holes and secure engine to frame with 5/16" x 1 1/2" HHC and locknuts.
3. Set container holder (6) onto container holder frame. Align holes and slip spacers (22) thru holes. Secure assembly with 3/8" x 1" HHC and locknuts. Set container (20) into container holder and tighten bolts until container holder supports container in a tilted position. Pivot container holder assembly to rest position.
4. Align slots on vertical upright (7) to hole on container holder frame and secure with 3/8" x 2 1/4" HHC, flatwasher and whizlock nuts. (NOTE: eyebolt brackets on the upright should be positioned toward container holder.)
5. Spin 5/16" hexnut onto eyebolts (8). Fit eyebolts thru eyebolt brackets on vertical support and secure with 5/16" whizlock nuts.
6. Slide intake nozzle (14) thru intake opening of molded top with lip inside. Slide 6" x 60" hose (25) over intake nozzle. Seat hose against molded top and secure with 6" band clamp (19).
7. Fit filter (15) over filter support assembly (11).
8. Align slots on container latch (13) to holes on molded top and secure with 1/4" x 1/2" truss screws and whizlock nuts.
9. Peel paper backing away from seal. Apply adhesive surface of inside of lip on bottom of molded top. Leave approximately 1" of seal hanging over edge of lip. Trim seal overlap.
10. Place molded top assembly on top of container. Align pivot hole on top support to pivot hole on vertical upright. Secure with 1/2" x 2 1/4" HHC and nylon locknut. Tighten until a slight drag is felt when pivoting top. Pivot upwards until springs (17) can be attached to spring retainer on top support and to eyebolts. Lower top assembly and slip 3/8" x 2 1/8" clevis pin (21) thru locking pin hole. Secure with 1/8" x 1" cotter key.
11. If molded top assembly does not align properly with container, loosen bolts at base of vertical upright and adjust. Rotate container clockwise until handle contacts vertical upright. Hook container latch over remaining handle. Slip band clamp over free end of 6" x 60" hose and slip over turbine housing neck. Tighten clamp (NOTE: some applications may require shorter hose length. Trim hose to desired length and replace clamp.
12. Attach chute to mower deck. Slip one end of hose (18) over neck and the remaining end over inlet. Fasten with 6" band clamps. (NOTE: trim to desired length, if necessary.)
13. Read engine operating instructions and service engine before starting.

TROUBLESHOOTING

PROBLEM	POSSIBLE CAUSE	CORRECTIVE ACTION
Engine fails to start	<ol style="list-style-type: none"> 1. Spark plug wire disconnected 2. Fuel tank empty 3. Faulty spark plug 	<ol style="list-style-type: none"> 1. Connect wire to spark plug 2. Fill tank with clean fuel 3. Clean, adjust gap or replace
Loss of power or erratic operation	<ol style="list-style-type: none"> 1. Spark plug wire loose 2. Blocked fuel line 3. Water or dirt in fuel system 4. Dirty air cleaner 5. Carburetor out of adjustment 6. Unit running on choke 	<ol style="list-style-type: none"> 1. Connect & tighten spark plug wire 2. Clean fuel line 3. Disconnect fuel line at carburetor drain fuel tank. Refill with fresh fuel 4. Service air cleaner (refer to engine manual) 5. Adjust carburetor (refer to engine manual) 6. Move choke lever to OFF position
Engine overheats	<ol style="list-style-type: none"> 1. Carburetor not adjusted properly 2. Engine oil level low 3. Operating below full RPM 	<ol style="list-style-type: none"> 1. Adjust carburetor (refer to engine manual) 2. Fill crankcase with proper oil 3. Run throttle full open.
Excessive vibration	<ol style="list-style-type: none"> 1. Damaged turbine or loose parts 	<ol style="list-style-type: none"> 1. Stop engine immediately and disconnect spark plug wire. Tighten all bolts & nuts. Make necessary repairs. If vibration continues, have unit serviced by an authorized dealer.
Unit won't pick up.	<ol style="list-style-type: none"> 1. Discharge chute clogged 2. Foreign object lodged in turbine. 3. Container full 	<ol style="list-style-type: none"> 1. Stop engine & disconnect spark plug wire. Clean inside of discharge chute. 2. Stop engine and disconnect spark plug wire. Remove lodged object in turbine. 3. Stop engine and empty container.

NOTE: Please contact the nearest authorized service dealer for repairs beyond the minor adjustments above.

MAINTENANCE



DANGER: The Trac-Vac was built to be operated according to the rules for safe operation in this manual. Carelessness or error on the part of the operator can result in serious injury. This unit is capable of amputating fingers or hands and throwing objects. Failure to comply with the safety instructions could result in serious injury or death.



CAUTION!!!
SPINNING BLADE

MAINTENANCE SCHEDULE	Before each use	After each use	Every season	Before Storage	Service Dates													
Check engine oil level	X																	
Check tire pressure	X																	
Check all hardware for tightness	X																	
Lubricate			X															
Clean		X		X														
Maintain engine per engine manual																		

BEFORE EACH USE

CHECK FOR LOOSE HARDWARE

- Make a thorough visual check of the unit for any bolts and nuts which may have become loose. Retighten any loose nuts and bolts

CHECK TIRE PRESSURE

- Check tire pressure regularly. The recommended tire pressure is printed on the tire.

CHECK ENGINE OIL LEVEL

- Check oil level before each use. Maintain engine oil as instructed in engine manual.

LUBRICATION

- Use a light machine oil to lubricate the axle where the hitch tongue pivots and the latch and pivot bolt at the beginning of each season.
- Grease or oil wheel bearings, using automotive wheel bearing grease at least once every season.



WARNING: Always stop engine and disconnect spark plug wire before lubricating, cleaning or before maintenance or repairs.

ENGINE MAINTENANCE

- Check oil level before each use, maintain engine oil according to the engine manual
- Service air cleaner after every 25 hours of normal conditions. Under extremely dusty conditions, clean every few hours. Poor engine performance usually indicates that the air cleaner needs to be serviced.
- Clean spark plug and reset gap once every season. It is recommended that the spark plug be replaced at the start of each season. Check the engine manual for the correct spark plug and gap specifications.

CLEANING

- Clean the unit after each use. Grass clippings and leaves can mildew and cause damage if not properly cleaned.
- Clean the engine regularly with a cloth or brush. Remove all dirt and debris from muffler area.

NOTES

OPERATING PROCEDURE

BEFORE STARTING: Follow engine manufacturer's instructions in preparing engine for operation. Never fill fuel tank indoors, with engine running or while engine is hot. Do not smoke while filling tank.

1. Inspect area to be vacuumed and pickup all harmful objects and litter. Rocks and other harmful debris can do serious damage to vacuum assembly and cause bodily injury.
2. For best vacuuming results, operate tractor at manufacturer's recommended speed for best cutting. If grass is high, mow first and vacuum on the second pass.
3. Your vacuum is preset to run at approximately 3200-RPM (380), 3800-RPM (385), at no load. Do not slow engine down.
4. **SHUT OFF ALL ENGINES TO UNLOAD.**
5. When operating tractor on slope or grade, exercise **extreme caution**. Do not cut across grade or slope. Mow directly up and down hills.
6. Periodically check all fasteners for tightness.
7. Listen for unusual vibration of engine or air turbine. If excessive vibration is present, **STOP ALL ENGINES** and check for damage to turbine fan.
8. Always shut off **ALL ENGINES** engine and vacuum engine before servicing.
9. Replace deflector shield when discharge chute is removed.
10. When removing clogs, **SHUT OFF ALL ENGINES**. **Failure to do so can cause serious bodily injury!**

EXTENDED STORAGE PROCEDURES

1. Wash and clean vacuum and lubricate any lubrication points. Grease wheel at axle for longer life.
2. Drain fuel from tank and run until fuel is exhausted in carburetor.
3. Drain and change the engine oil.
4. Clean tires and check pressure. Raising and supporting unit with weight off tires is recommended.
5. When storing a unit with Rubbermaid® containers, leave containers latched to top.

TRAC VAC WARRANTY POLICY

Midwest Equipment Manufacturing, Inc. will repair or replace, free of charge, any part or part that are defective in material or workmanship or both for a period of one year residential use and 90 days for commercial and rental use. The purchaser will pay transportation charges on parts submitted for replacement under warranty. For warranty service, contact your local dealer from whom the unit was purchased. There are no other express or implied warranties. Some states do not allow limitations on how long an implied warranty lasts, and some states do not allow the exclusion or limitation of incidental or consequential damages, so the above limitation and exclusion may not apply to you. This warranty gives you specific legal rights and you may have other rights, which vary from state to state.

MIDWEST EQUIPMENT MANUFACTURING, INC.-5225 Serum Plant Road.-Thorntown, IN
46071

Phone: 1-800-Trac-Vac

Web Page: www.trac-vac.com E-Mail: sales@midmfg.com