

TRAC VAC

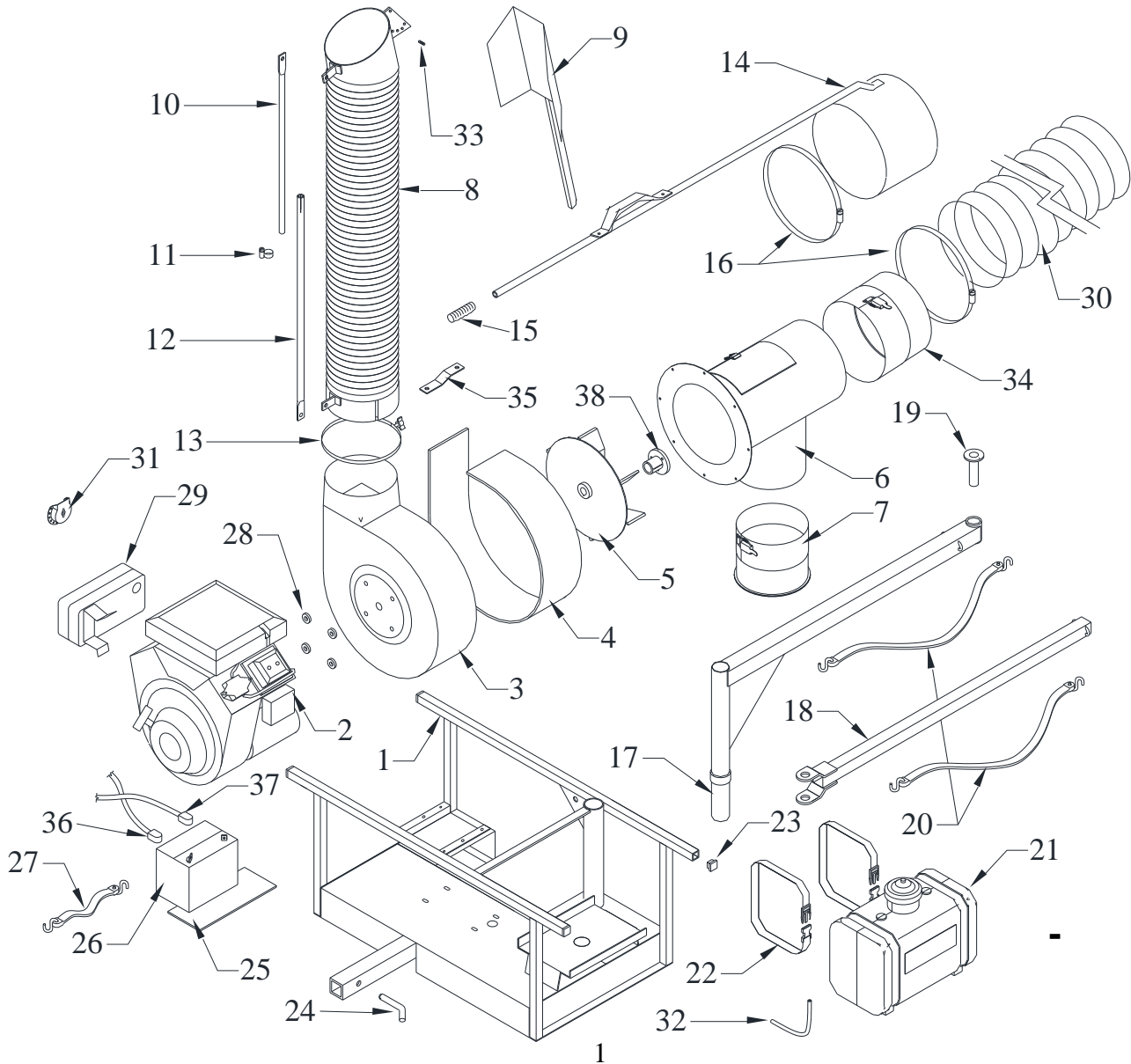
TRUCK LOADER Model 2116



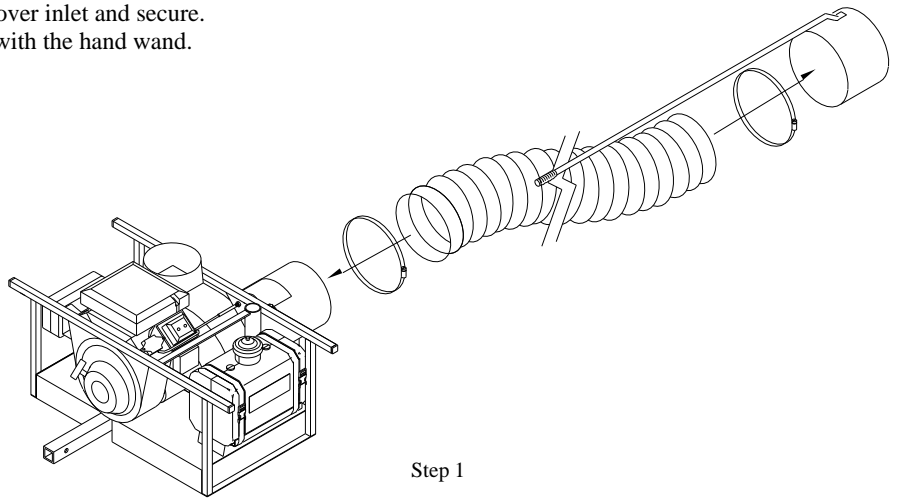
**Operating and Assembly Manual
Midwest Equipment Manufacturing, Inc.
5225 Serum Plant Road,
Thorntown, IN 46071**

Trac-Vac Model 2116 Parts List

Key	Qty.	Part No.	Description	Key	Qty.	Part No.	Description
1	1	21161	Main Frame, 2116	20	2	28888	31" Tarp Strap
2	1	18140	Engine, 16HP V-Twin Briggs	21	1	72710	Gas Tank, 5 Gal. Remote
3	1	20060	Turbine Housing, 2100	22	2	16233	Gas Tank Strap, Nylon
4	1	20021	Liner, 8" Turbine Housing	23	4	21166	End Cap, 1" x 1"
5	1	28911	Turbine, 14" Heavy Duty	24	1	85226	Bent Pin, 5/8"
6	1	28841	10" Inlet, 288	25	1	18116	Battery Pad
7	1	28833	Rock Trap Ass'y, 288	26	1	18123	Battery
8	1	21167	Exhaust Hose, 2116	27	1	18117	Battery Strap
9	1	20035	Discharge Deflector	28	4	86027	Spacer, Turbine Housing
10	1	20037	Hose Support Extension	29	1	18141	Muffler, 16HP Briggs V-Twin
11	1	20039	Hose Clamp, Support Arm	30	1	20041	Hose, 10" x 10'
12	1	21168	Hose Support	31	1	18115	Muffler Deflector
13	1	20031	Quick Clamp, 8"	32	1	21164	1/4" Fuel Line x 12"
14	1	28838	10" Intake Nozzle	33	1	32108	Spring
15	1	45107	Handle Grip	34	1	21165	10" Quick Connect
16	2	28884	10" Hose Clamp	35	1	20052	Bracket, Turbine Support
17	1	28858	Hose Support Arm	36	1	18122	Battery Cable, 8"
18	1	28859	Support Arm Extension	37	1	16212	Battery Cable, Red/Positive 40"
19	1	28801	Pin, 1"	38	1	162104	Bushing, P2 Hub



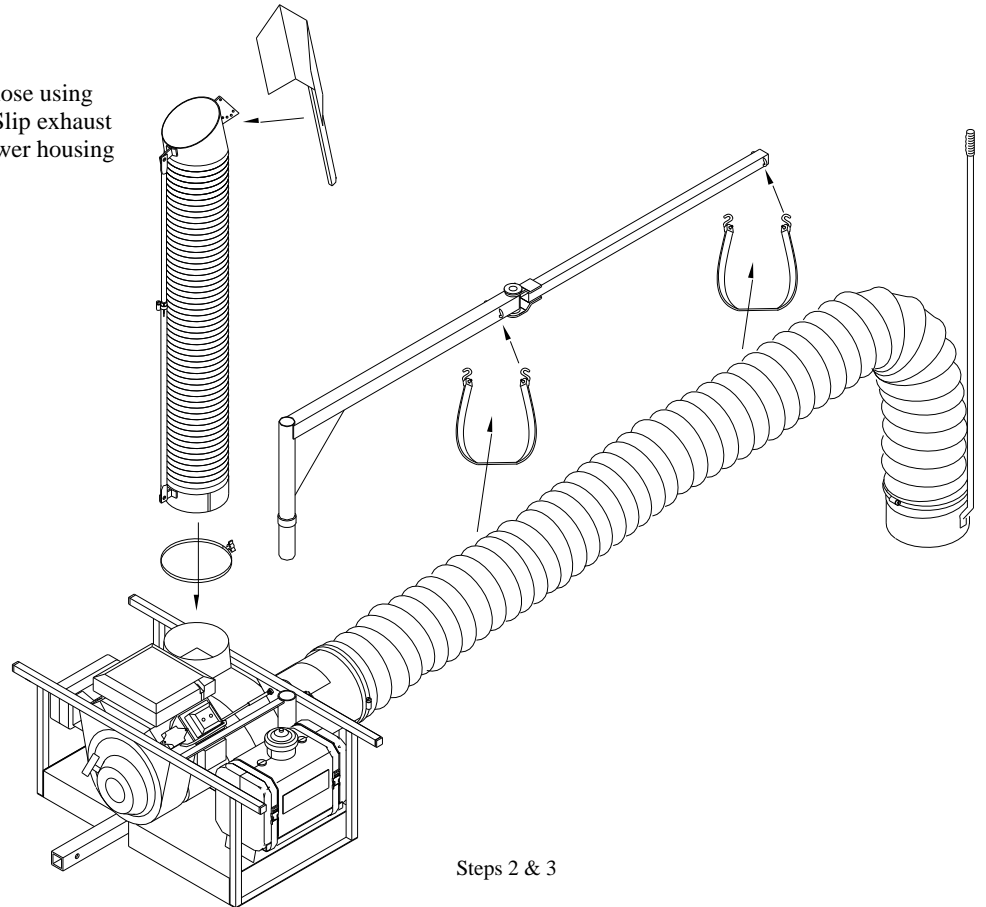
1.) Slip 10" hose clamp over hose and slip hose over inlet and secure.
Repeat same procedure at opposite end of hose with the hand wand.



Step 1

2.) Drop hose support arm into receiver on frame of vac.
Connect support arm extension to support arm with the 1" diameter pin and attach 10" hose to hose support assembly with 31" tarp straps provide.

3.) Attach exhaust deflector to exhaust hose using bolt and spring on top of exhaust hose. Slip exhaust hose down onto exhaust neck of the blower housing and secure with the 8" quick clamp.



Steps 2 & 3

4.) Slip entire assembly into reese hitch and secure with 5/8" bent pin and hairpin clip. Loosen clamp on hose support on the metal exhaust hose and bend hose to the desired location and resecure clamp.

9-20-05

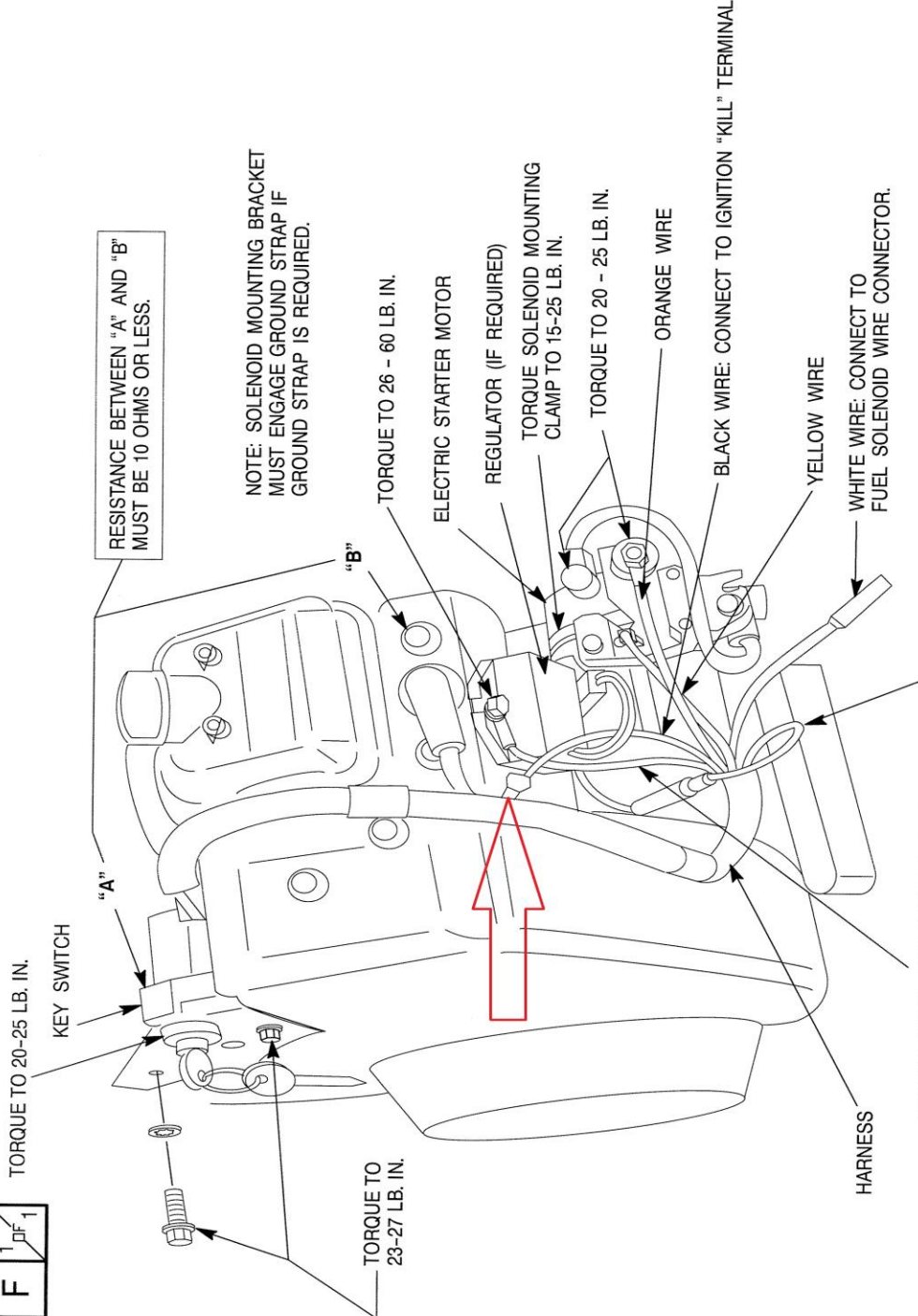
PERIODICALLY CHECK ALL FASTENERS FOR TIGHTNESS.

807817-3

REV. SHEET
1 OF 1
F

3

REV					
E	REDRAWN AND ADDED NEW SOLENOID MOUNTING & REGULATOR	EMB	81863	8-29-01	
F	ADDITIONAL TEXT ADDED & WIRING CHANGES MADE	EMB	83286	5-30-02	



RESISTANCE BETWEEN "A" AND "B" MUST BE 10 OHMS OR LESS.

NOTE: SOLENOID MOUNTING BRACKET MUST ENGAGE GROUND STRAP IF GROUND STRAP IS REQUIRED.

RED WIRE: CONNECT TO REGULATOR. (WITH CHARGE INDICATOR REGULATOR - #808852 - THE RED WIRE TO BE LOOSE AND CUSTOMER WILL MAKE CONNECTION THROUGH HARNESS)

BROWN WIRE: CONNECT TO GROUND. (WITH NO REGULATOR OR SINGLE MOUNTING HOLE REGULATOR - #491546 - BROWN GROUND WIRE TO BE CONNECTED DIRECTLY TO AIR GUIDE)

MATERIAL		THIS DRAWING IS PROPRIETARY PROPERTY OF BRIGGS & STRATTON CORPORATION DISCLOSED IN CONFIDENCE, WHICH MAY NOT BE USED OR DISCLOSED WITHOUT PERMISSION. RETURN PROMPTLY AFTER USE		TITLE		BRIGGS & STRATTON CORP.	
S/N:	-	CODE:	-	16 AMP KEYSWITCH PANEL & ELECTRIC STARTER SOLENOID INSTALLATION		MIL WAUKEE, WISCONSIN, U.S.A.	
FIRST USED ON:	29, 30, 35	DRAWN WEB:	1-9-90	CLASSIFICATION OF CHARACTERISTICS CRITICAL (C-) MAJOR (M-)		CORPORATE ENGINEERING	
SIMILAR TO:	-	CHECK:		DIMENSIONING AND TOLERANCING PER ASME Y14.5M - 1994		REV. SHEET	
		APPR. RCG:	1-10-90	SCALE: FULL		807817-3	
						F 1 OF 1	

DO NOT SCALE DRAWING



MIL WAUKEE, WISCONSIN, U.S.A.

CORPORATE ENGINEERING

807817-3

REV. SHEET
F 1 OF 1

Operating Procedure

1. Follow engine manufacturer's instructions in preparing engine for operation.
2. Inspect area to be vacuumed and pick up all harmful objects.
3. Periodically tighten all hardware.
4. Listen for unusual vibration of engine or air turbine. If excessive vibration is present, **STOP** engine and check for damaged blade.
5. Always shut off vacuum before servicing.
6. When removing clogs, **SHUT OFF ENGINE.**

TRAC VAC WARRANTY POLICY

Midwest Equipment Manufacturing, Inc. will repair or replace, free of charge, any part or parts that are defective in material or workmanship or both for a period of one year residential use, and 90 days for commercial and rental use. The purchaser will pay transportation charges on parts submitted for replacement under warranty. For warranty service, contact your local dealer from whom the unit was purchased. There are no other express or implied warranties. Some states do not allow limitations on how long an implied warranty lasts, and some states do not allow the exclusion or limitation of incidental or consequential damages, so the above limitation and exclusion may not apply to you. This warranty gives you specific legal rights, which vary from state to state.

MIDWEST EQUIPMENT MANUFACTURING, INC.

5225 Serum Plant Rd.

Thorntown, IN 46071

Phone: 1-800-Trac-Vac

Web Page: www.trac-vac.com E-Mail: sales@midmfg.com